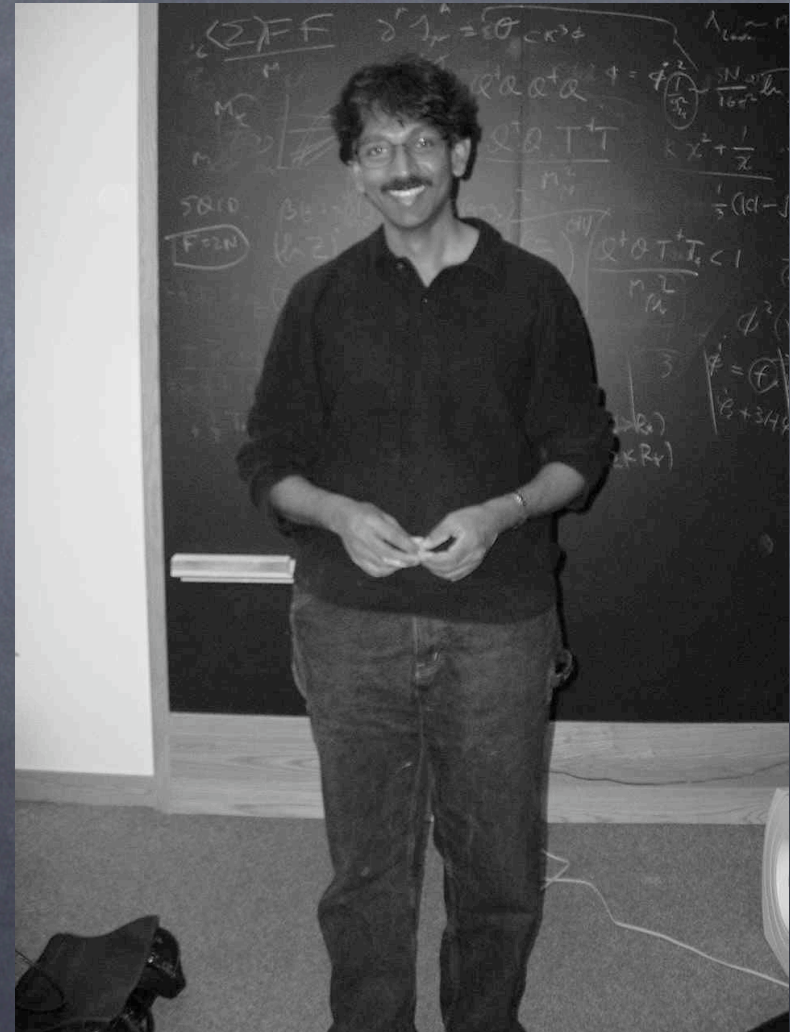
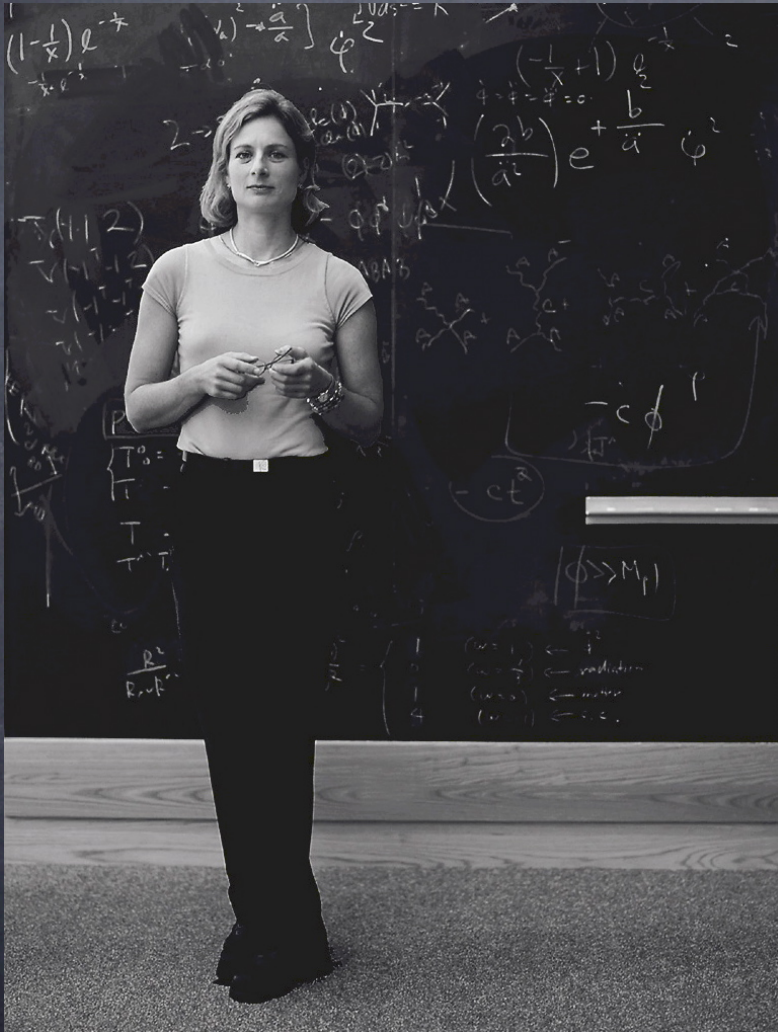
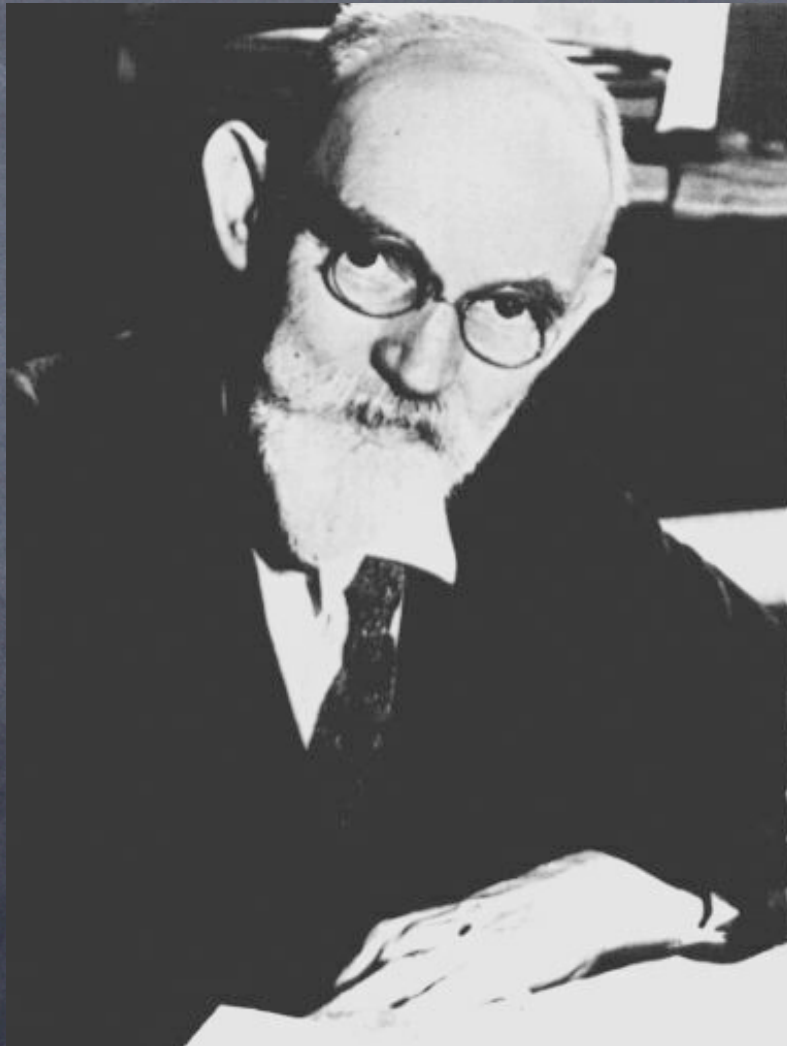


Chapter 20: Warped Extra Dimensions

Randall-Sundrum

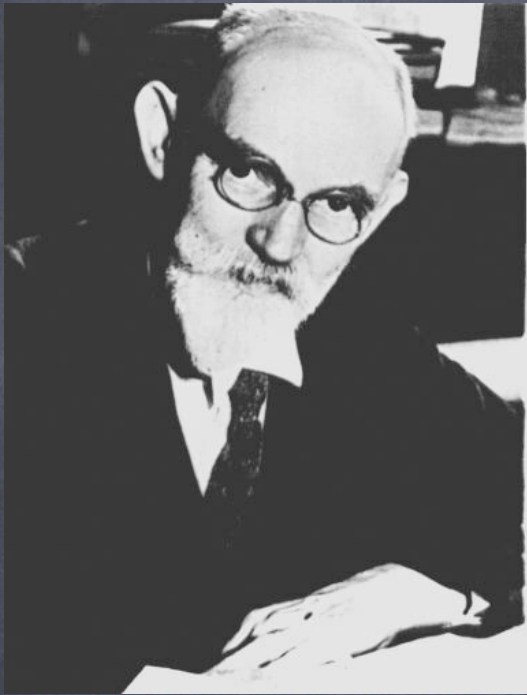


de Sitter



positive
cosmological
constant

de Sitter vs Anti-de Sitter

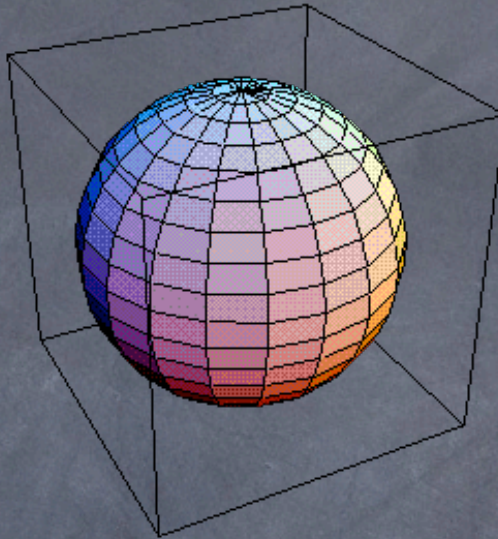


positive
cosmological
constant



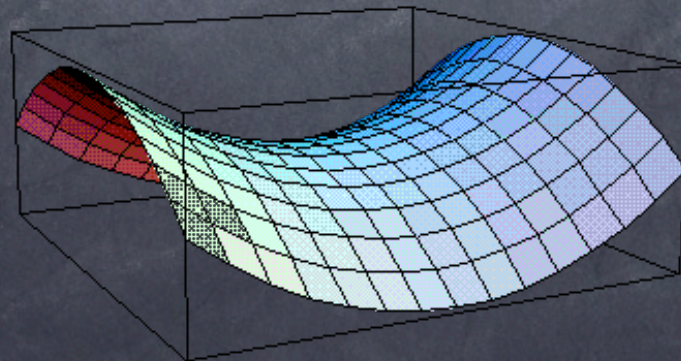
negative
cosmological
constant

Sphere



positive
curvature

Anti-de Sitter



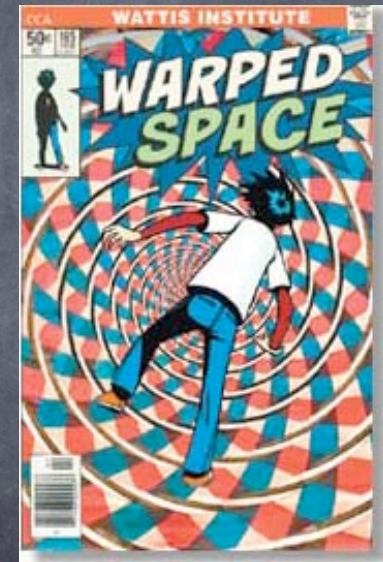
negative
curvature

Fine Tuning Λ

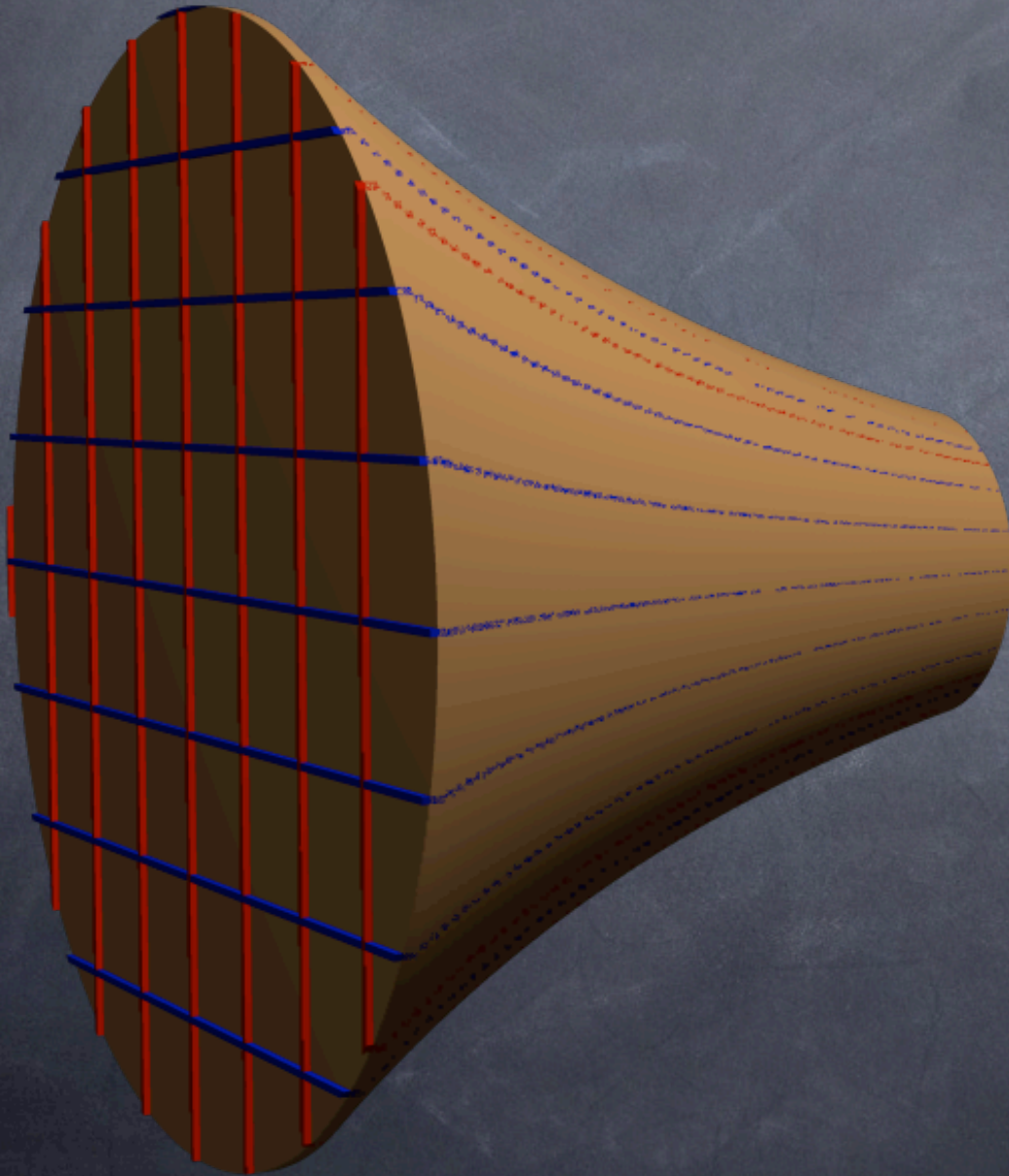


$$\Lambda_{4D} = \Lambda_{5D} + \Lambda_{brane} + \Lambda_{brane} \approx 0$$

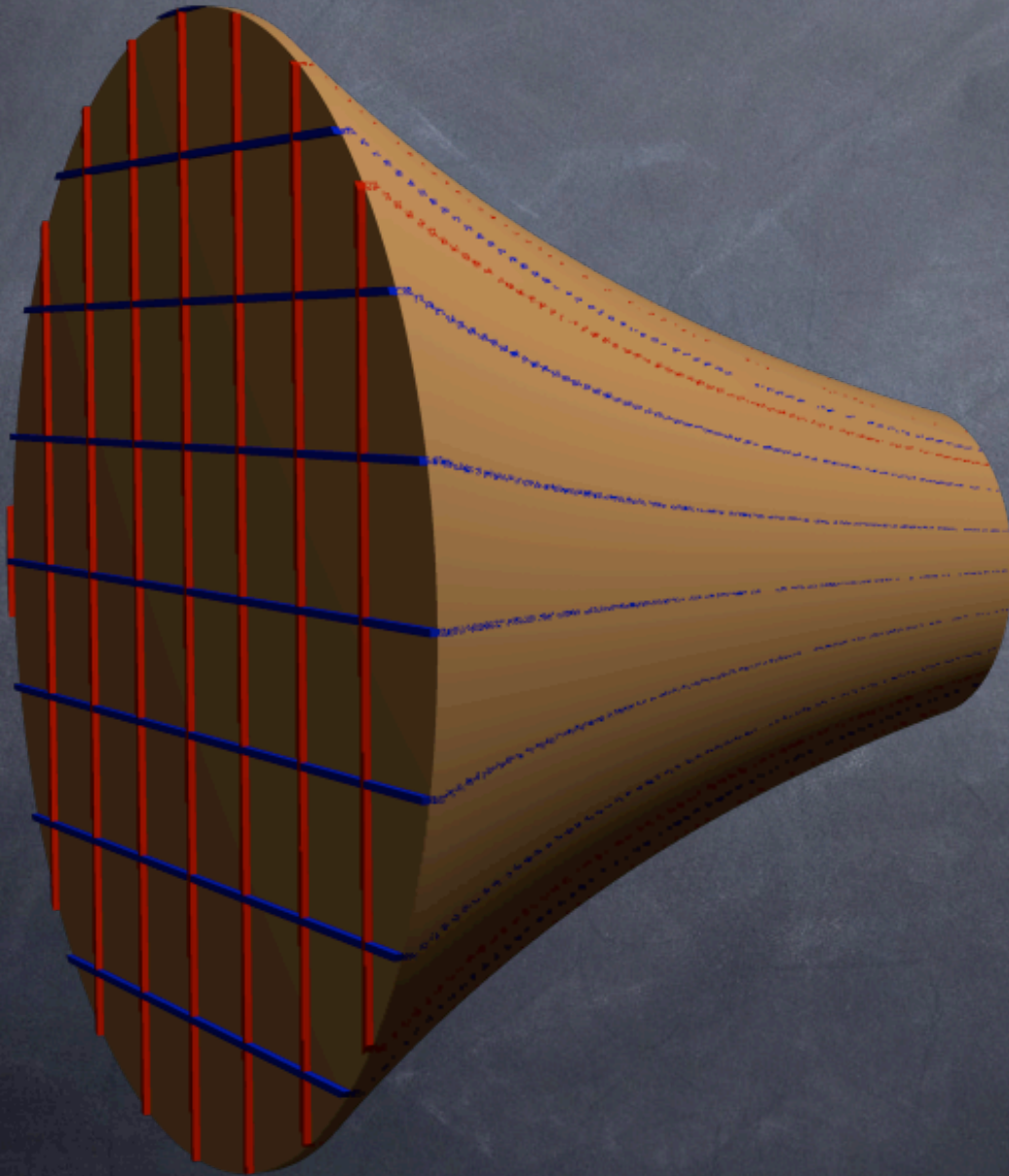
Tom Banks



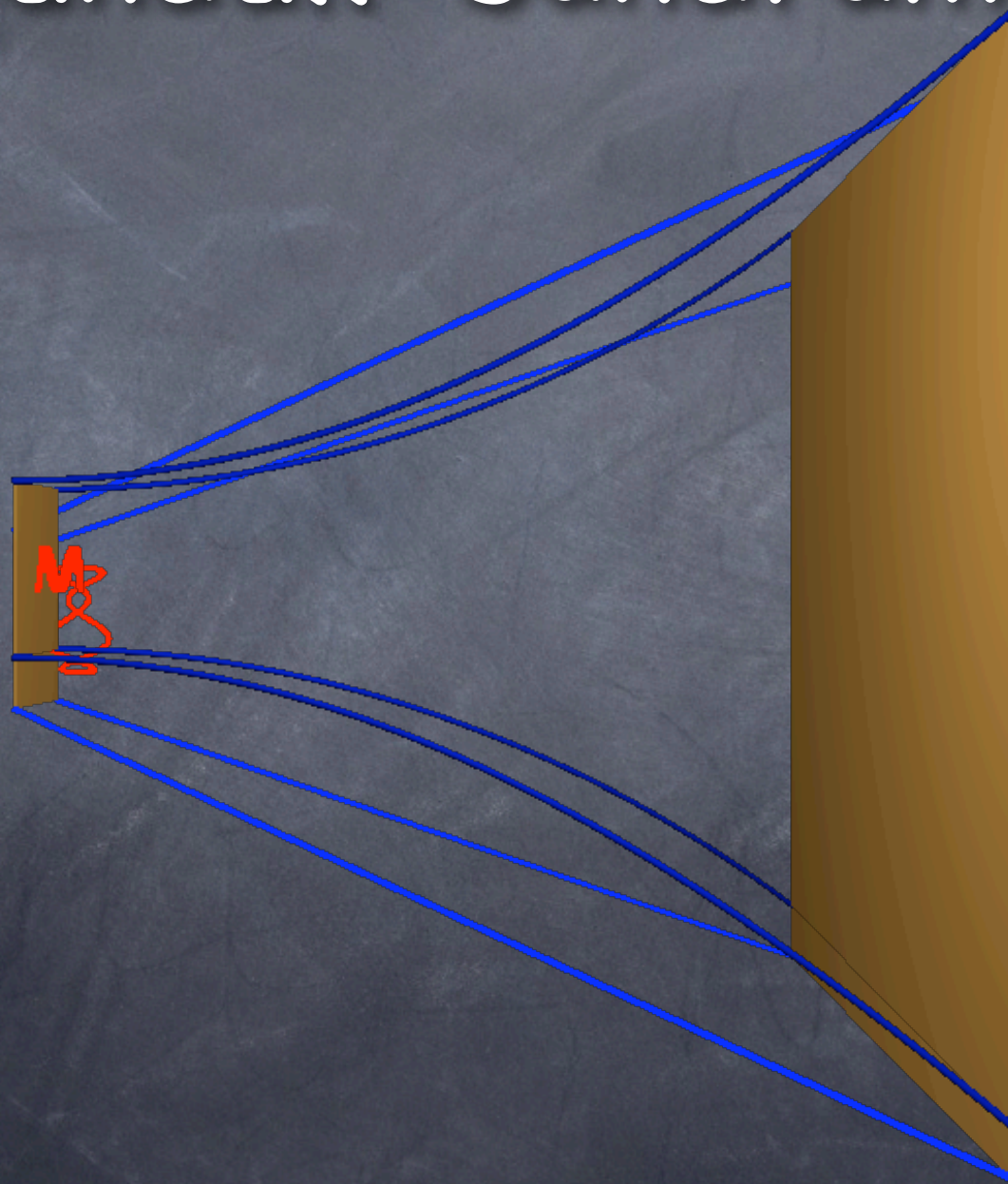
Warped Space



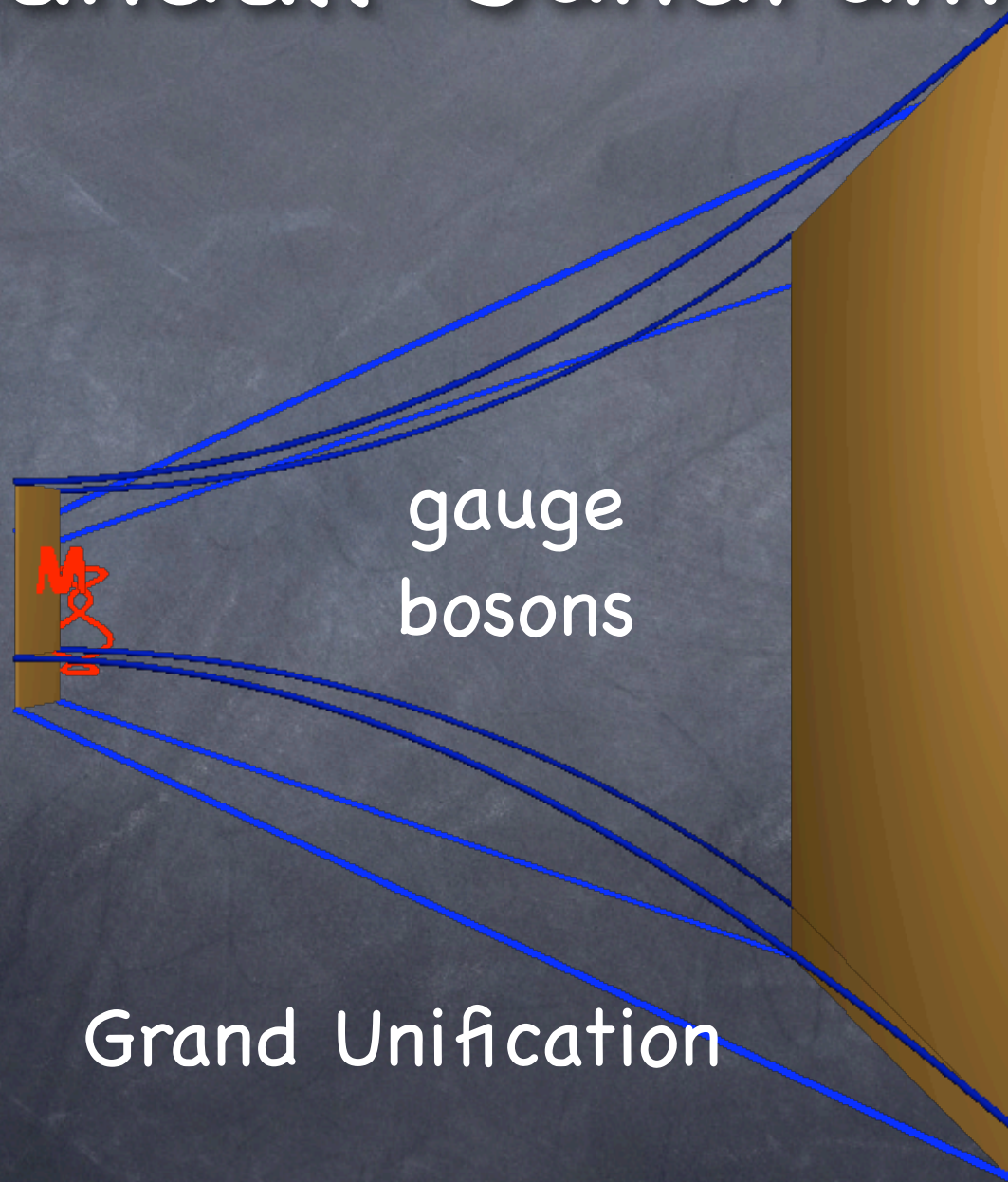
Warped Space



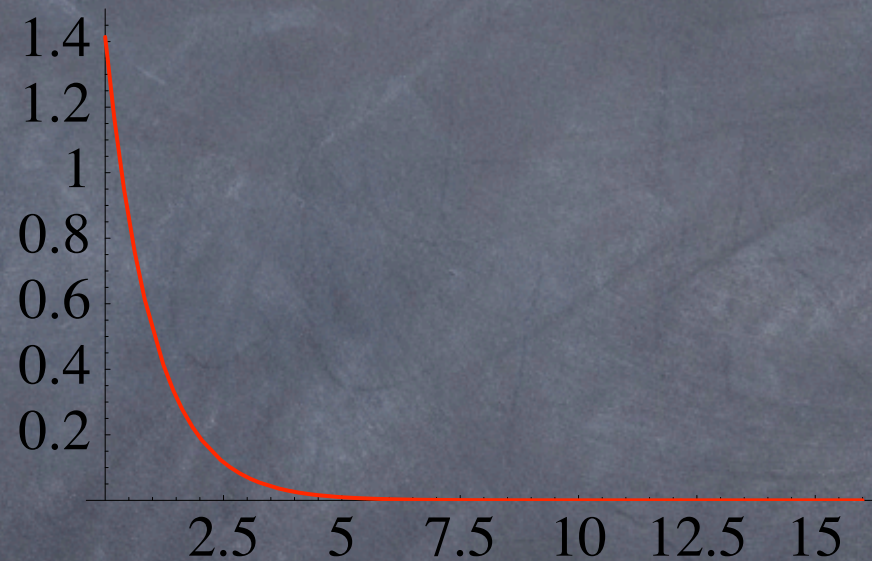
Randall-Sundrum



Randall-Sundrum



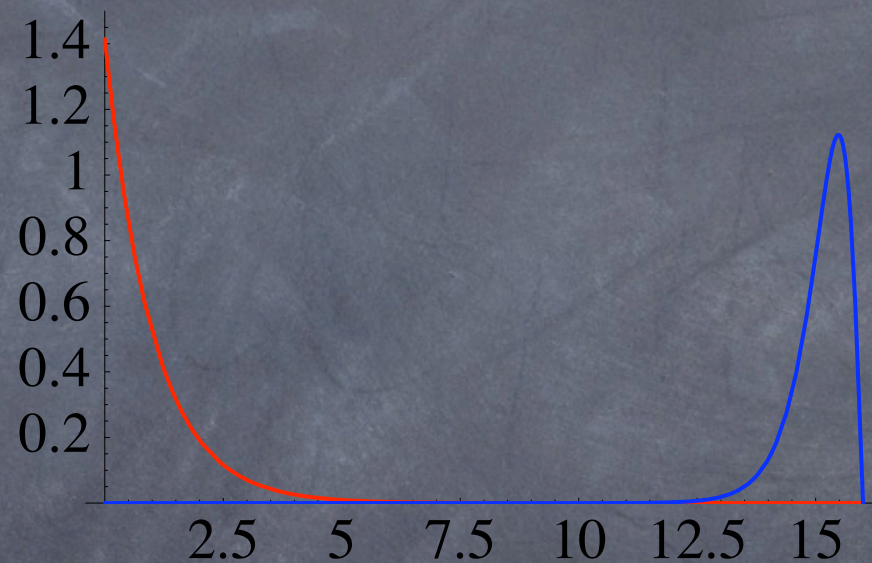
Graviton Probability



Gravity
brane

Weak
brane

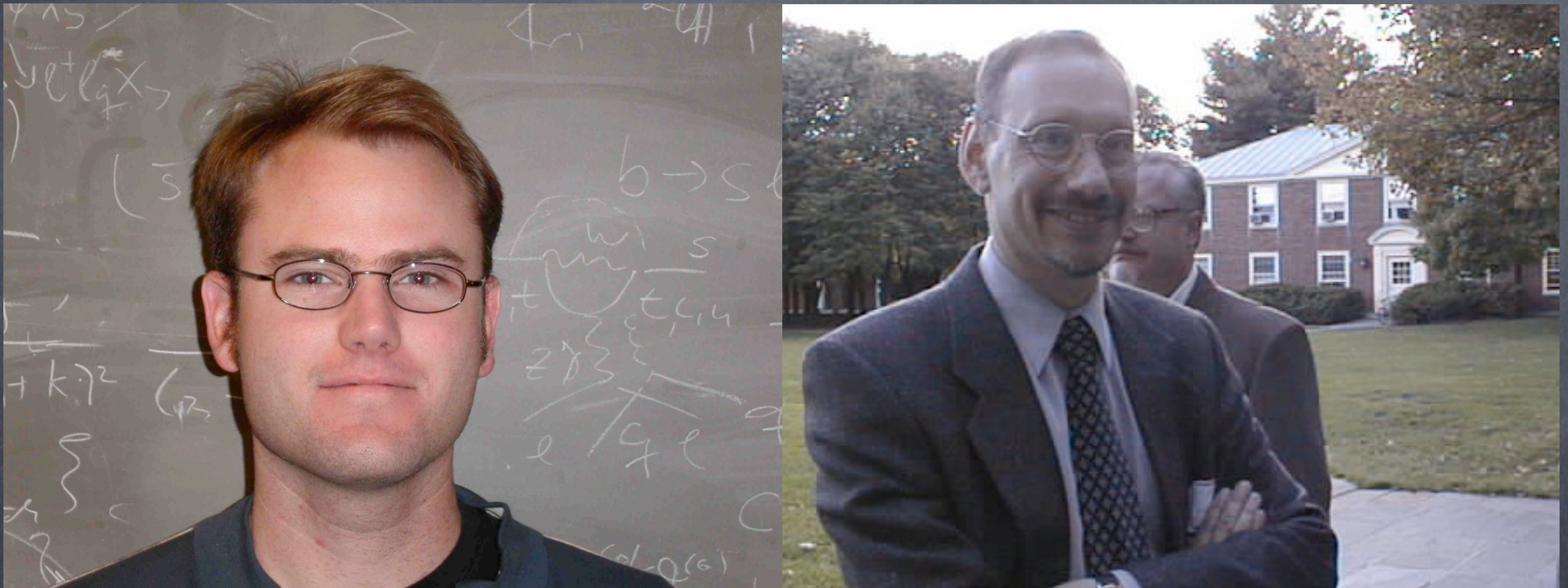
KK Graviton Probability



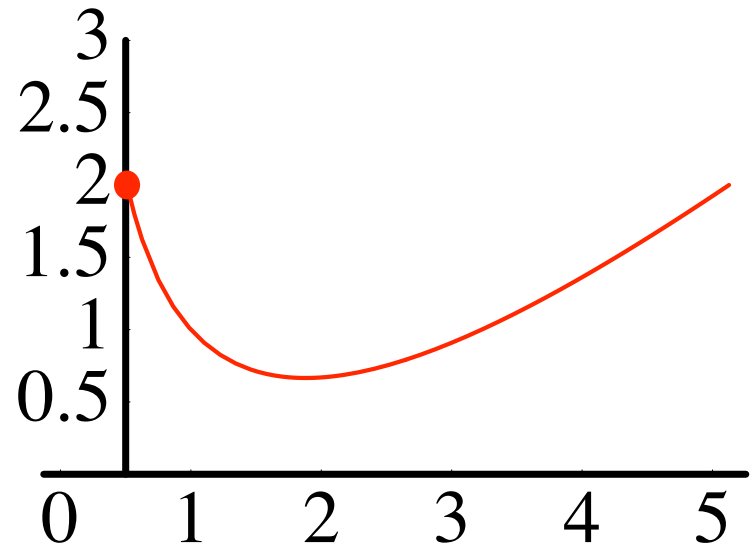
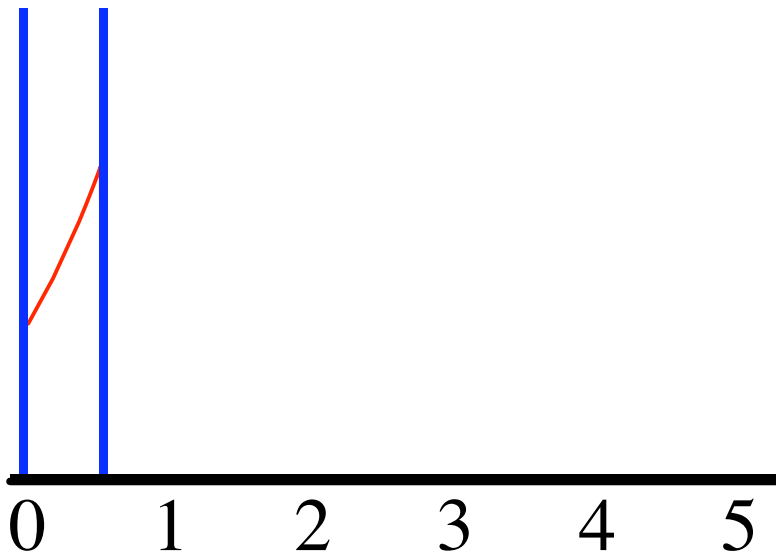
Gravity
brane

Weak
brane

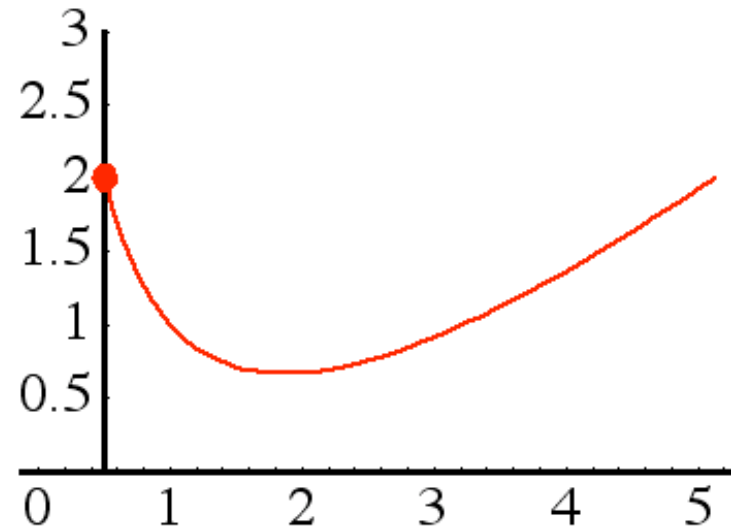
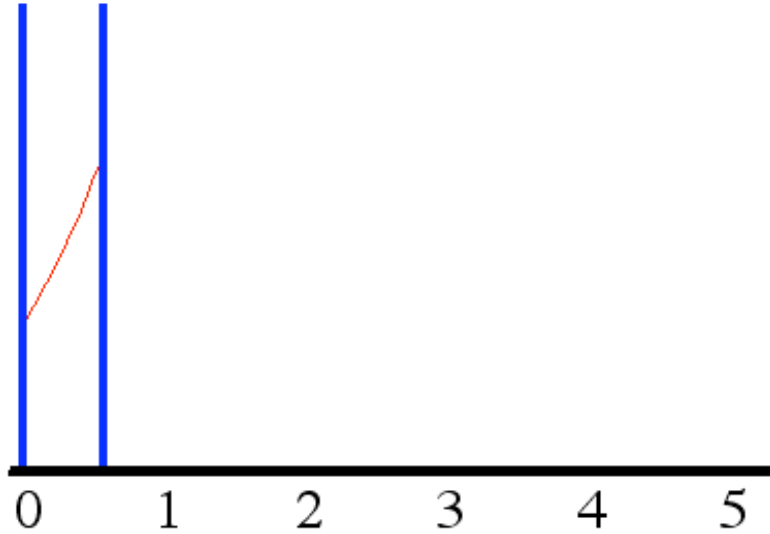
Goldberger, Wise



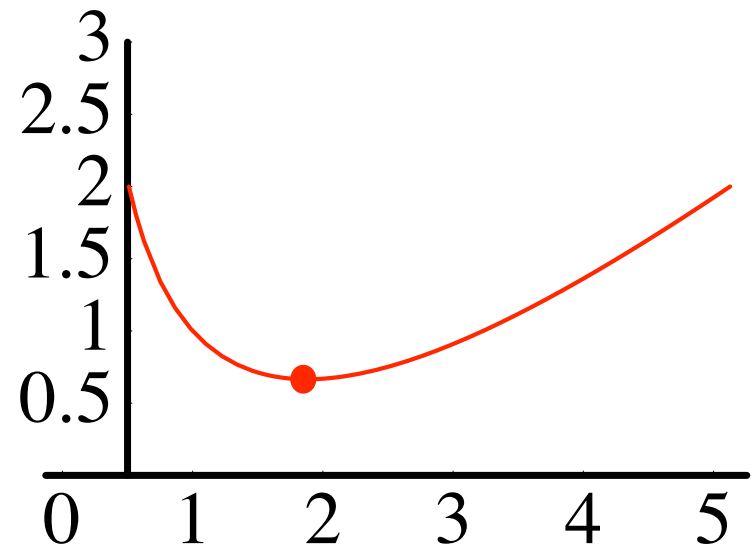
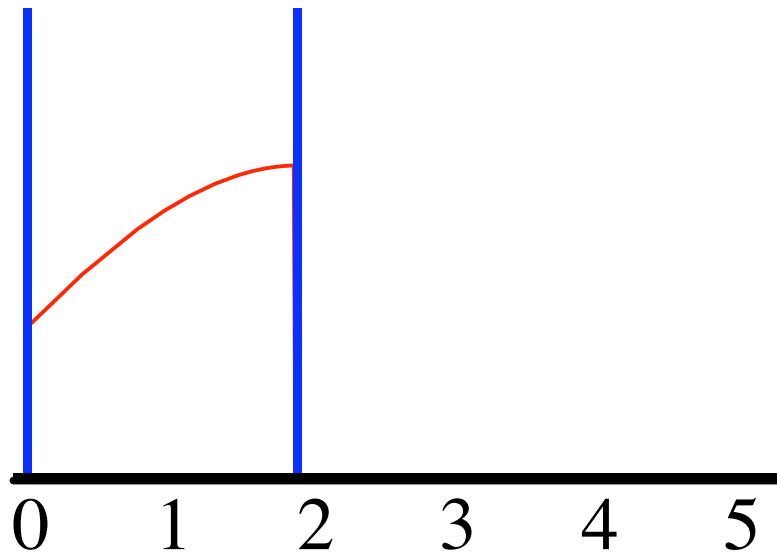
Goldberger, Wise



Goldberger, Wise



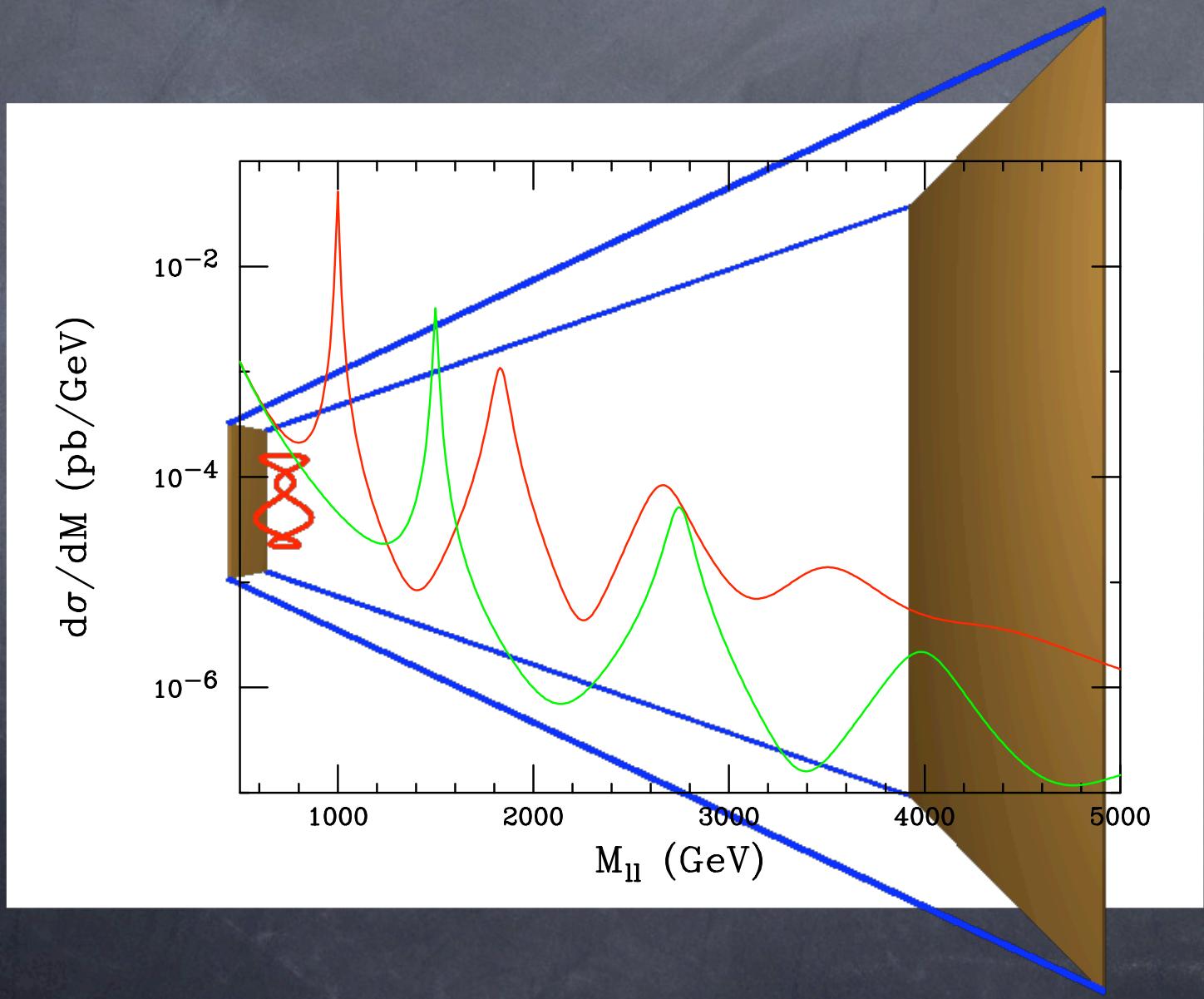
Goldberger, Wise



Detection at LHC



Graviton KK modes at LHC



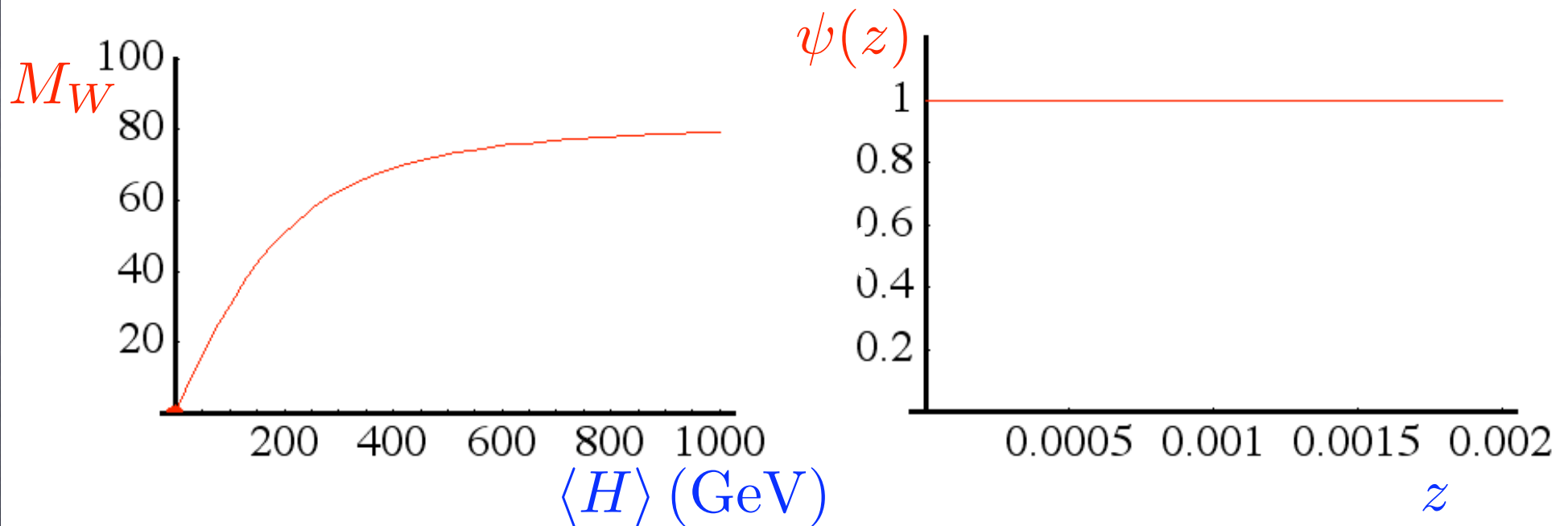
Hierarchy Problem



Max Energy on brane = M_{weak}

$$M_{Higgs} < M_{weak}$$

Higgs on a Boundary



M_W is insulated from divergences

Going Higgsless

Gauge bosons



Z boson mass = 90 protons

Hierarchy Problem Now

